



ECONOMIC TRENDS FACTSHEET

Mayor Joseph A. Curtatone
City of Somerville
Office of Strategic Planning and Community Development

Introduction

The population Trends Report was prepared by the Mayor's Office of Strategic Planning and Community Development (OSPCD) in order to establish a solid foundation of data from which to assist preparing a Comprehensive Plan for the city.

Additionally, with the 2010 Census approaching, an understanding of previous population will be critical to ensure an accurate understanding of Somerville's residents.

Topics of the Report:

- Residential Employment
- Residential Occupations
- Industry Employment
- Industry Wages
- Industry Establishments
- Business Locations
- Non-market economy

Key Findings:

- Somerville has a small base of local employment compared with its large residential population and resident workforce.
- Somerville is a City of small businesses. The large majority of establishments, over 80% employ fewer than ten people. However, small businesses account for only 24% of total employment in the City.
- While wages have grown in the 2000's, employment has fallen and real wages have grown slowly.
- The largest industry sector in Somerville is Health and Social Services, which employed 3,760 people in 2007, includes 130 different establishments and pays an average wage of \$56,940 (nominal \$2007). However, other significant industry sectors have very low and part-time wages.
- Establishment location in the city is centered in two types of areas: the major commercially zoned districts of Somerville (Davis, Union and Assembly Square) and along major arterial roads (Highland Ave, Somerville Ave, Broadway).
- Somerville is a regional leader in retail employment even though the retail trade establishments are small in size



www.somervillema.gov

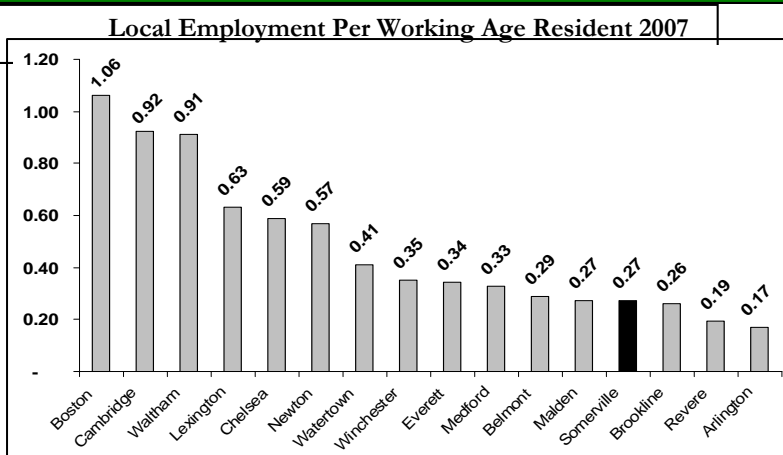
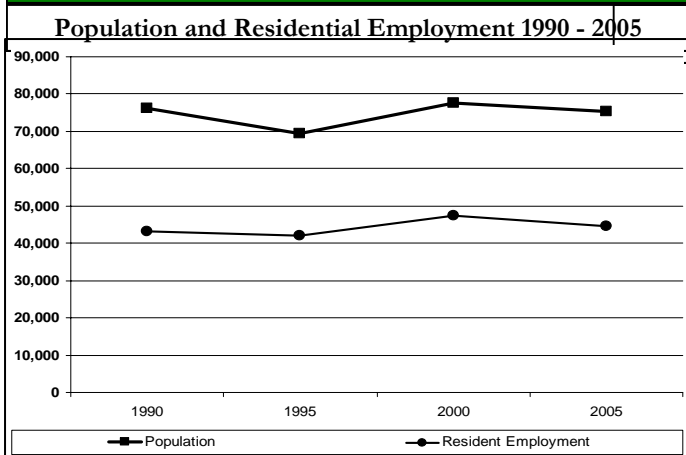




ECONOMIC TRENDS FACTSHEET

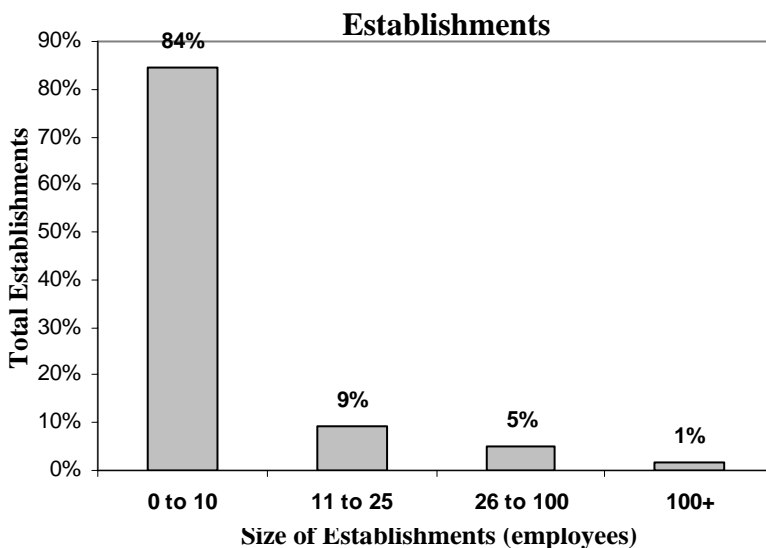
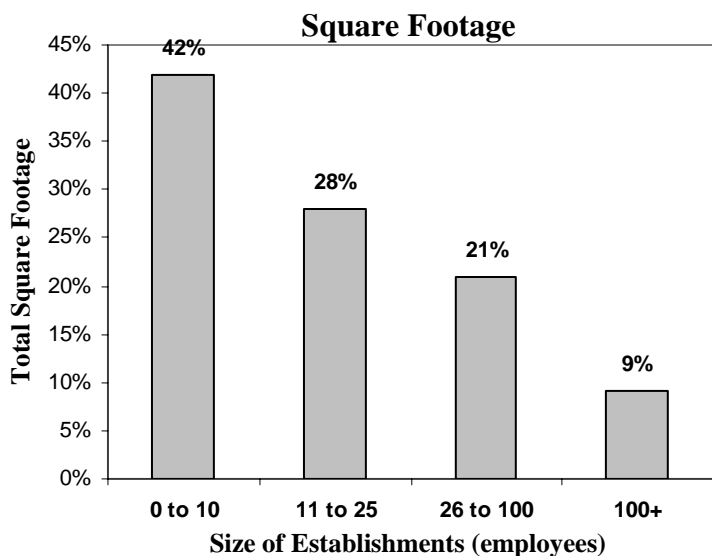
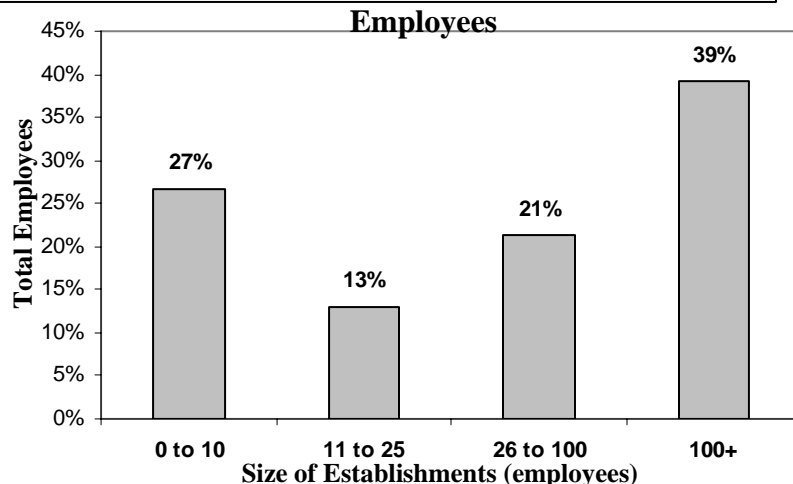
Key Finding 1:

Somerville has a small base of local employment compared with its large residential employment and population.



Key Finding 2:

Somerville is a City of small businesses. The large majority of establishments, over 80%, employ fewer than ten people. However, small businesses account for only 24% of total employment in the City.

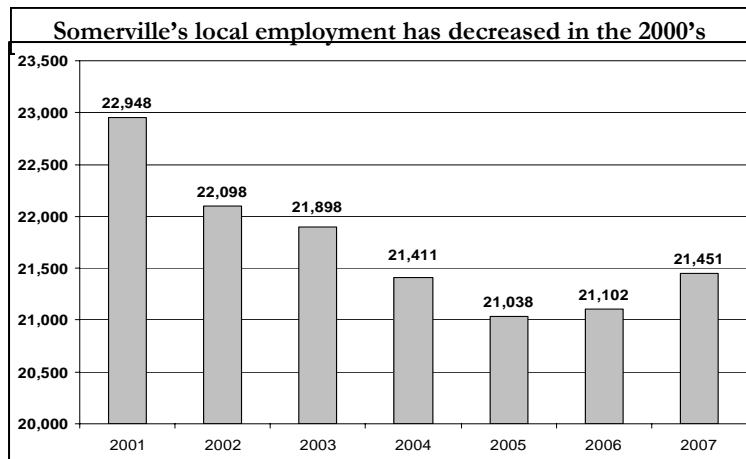
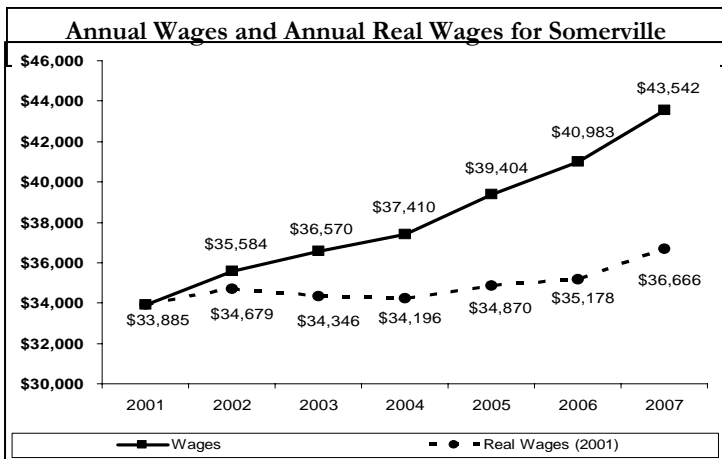




ECONOMIC TRENDS FACTSHEET

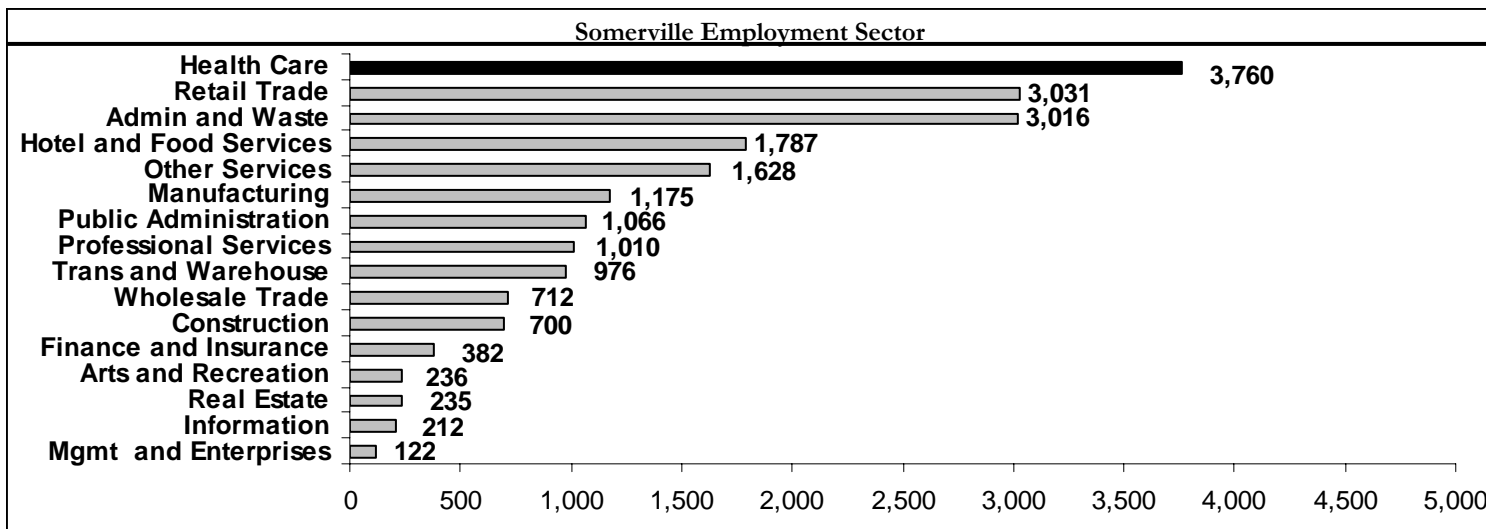
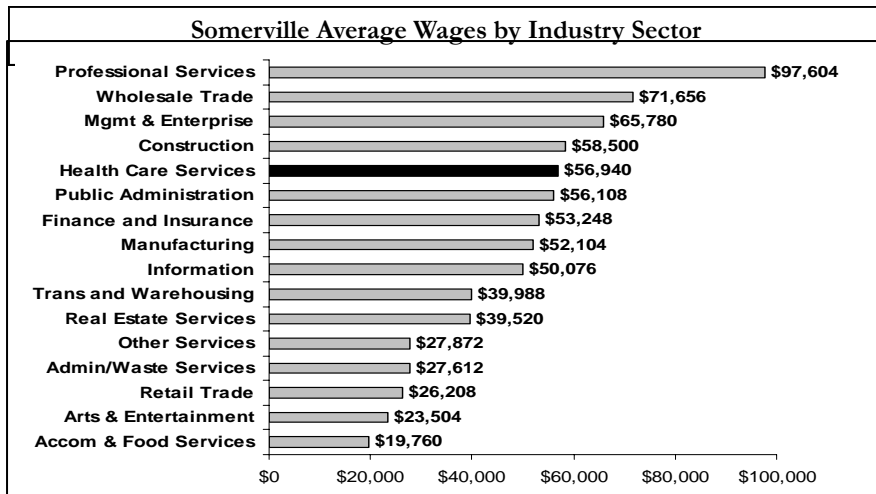
Key Finding 3:

While wages have grown in the 2000's, employment has fallen and real wages have grown slowly



Key Finding 4:

The largest industry sector in Somerville is Health and Social Services, which employed 3,760 people in 2007, includes 130 different establishments and pays an average wage of \$56,940 (nominal \$2007). However, other significant industry sectors have very low and part-time wages (Retail, Admin & Waste, Hotel & Food Services).

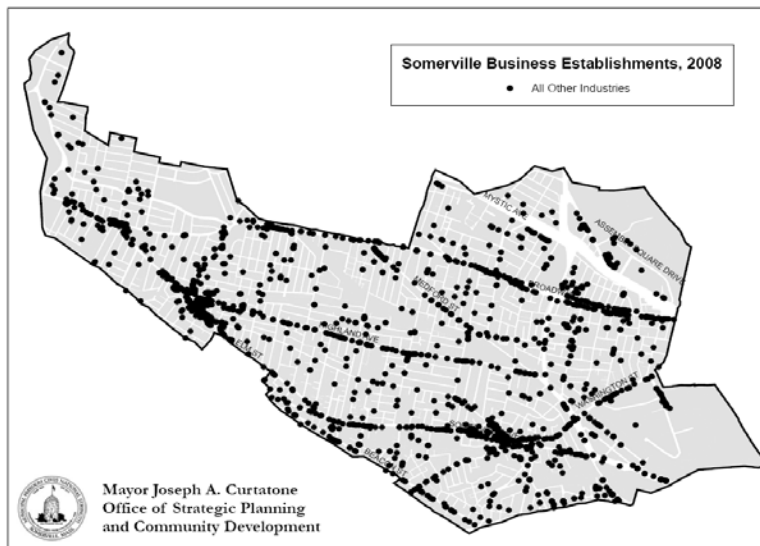




ECONOMIC TRENDS FACTSHEET

Key Finding 5:

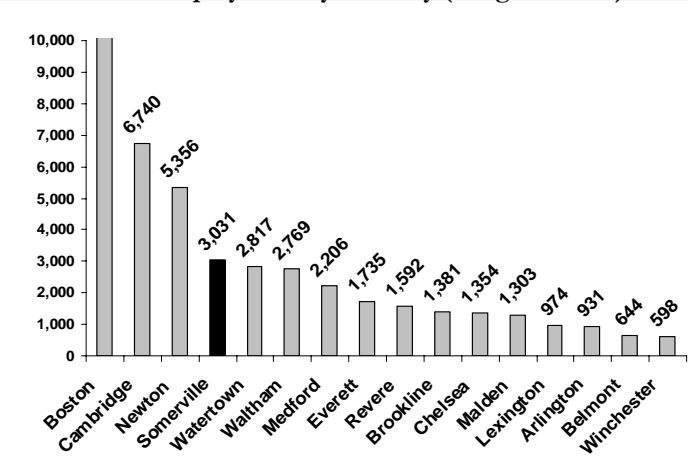
Establishment location in the city is centered in two types of areas: the major commercially zoned districts of Somerville (Davis, Union and Assembly Square) and along major arterial roads (Highland Ave, Somerville Ave, Broadway).



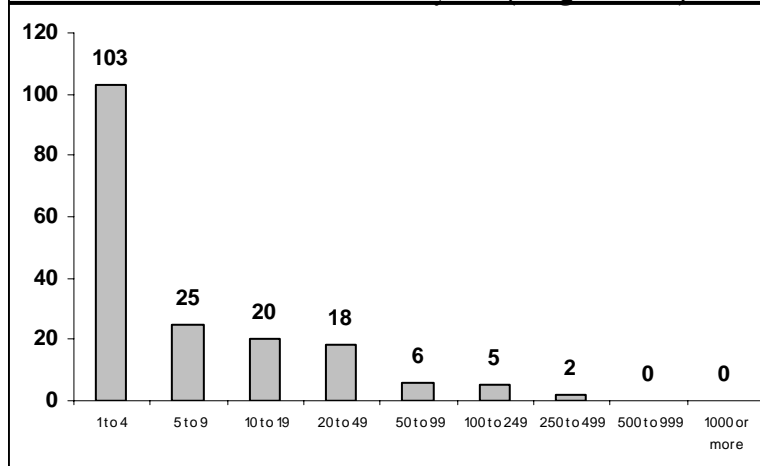
Key Finding 6:

Somerville is a regional leader in retail employment even though the retail trade establishments are small in size

UCN Retail Employment by Industry (2-digit NAICS) 2007



Somerville Retail Establishments by Size (2-digit NAICS) 2006



www.somervillema.gov

